

STAHL+BAND



EARTH LIGHT

Contact for Price | small: 6.7"H x 3.75"D, large: 8.5"H x 4.9"D | Ceramics

**Available in other finish options*

STAHL+BAND



SPECKLED WHITE
GLOSS GLAZE FINISH



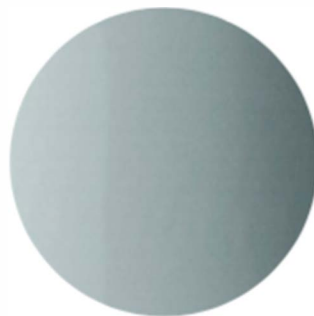
PURE WHITE
GLOSS GLAZE FINISH



SATIN WHITE
SATIN GLAZE FINISH
NEW GLAZE
OFFERING FOR 2019



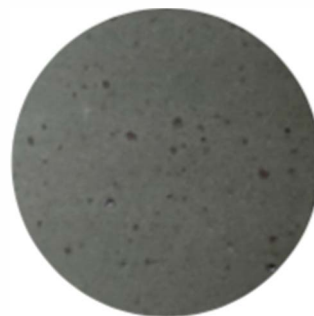
TERRACOTTA
MATT CLAY BODY
FINISH



DOVE GREY
GLOSS GLAZE FINISH



CHARCOAL
MATT GLAZE FINISH



OLIVE GREEN
SATIN GLAZE FINISH
NEW GLAZE OFFERING
FOR 2019

STAHL+BAND

EARTH LIGHT

CERAMICS

8 3/4" H X 5" D

INFO: UL LISTED (WET OR DAMP AVAILABLE)

SCREW SPACING ON THE BACK PLATE FOR
JUNCTION BOX IS 3 1/4" APART
(CENTER TO CENTER)

