


STAHL+BAND



Longing Lamp shown in Graphite.

LONGING LAMP

Standard Dimensions	Overall: 23" L x 10" W x 40" H Weight: 110 lbs	<i>*Limited Edition *Size subjective, please expect minor changes in dimensions and weight.</i>
Materials	Gypsum, Brass	
Details	Lamping: GU10 120V Bulbs Included: Yes Dimmable: Yes Electrical Cable: Black Fabric	
Gypsum Finishes	 <p><i>*Texture and color may vary due to its natural material and working process.</i></p>	
List Price *	Upon Request	

STAHL+BAND

Gypsum Finishes



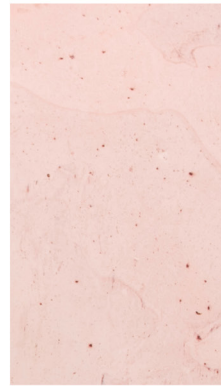
NATURAL WHITE



ECRU



PINK BEIGE



OXIDE PINK



BURNT SIENA



YELLOW OCHRE



HAZELNUT



GREEN UMBER



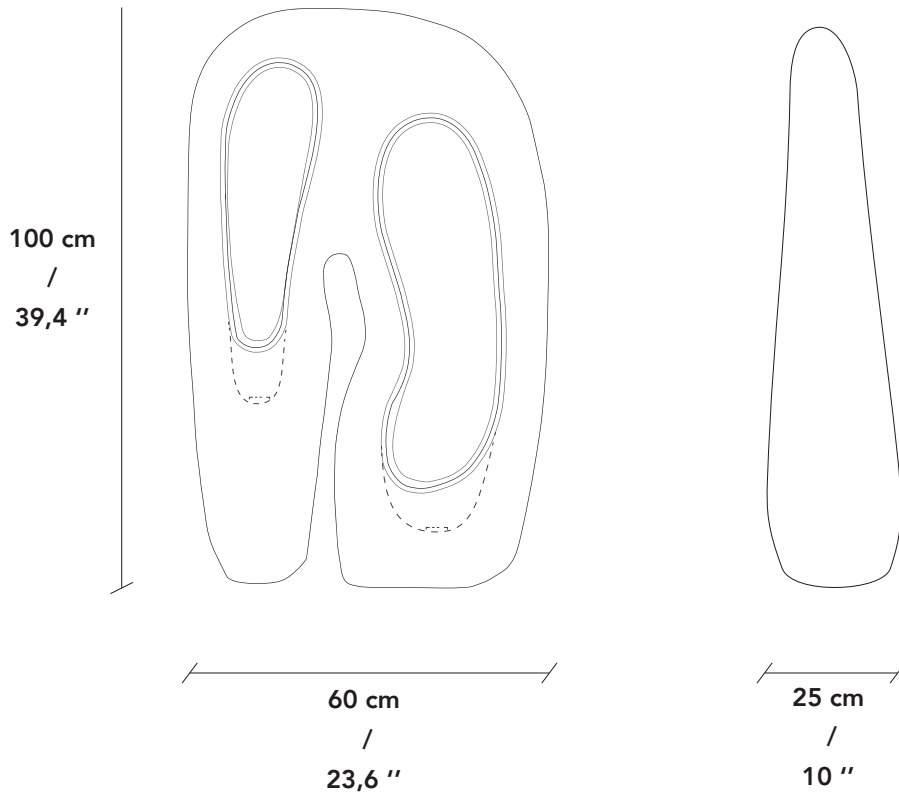
GRAPHITE



BONE BLACK

STAHL+BAND

Specification Drawing – Longing Lamp



Care Instructions

To clean the lamp, adhere to the following steps: First, turn off and unplug the lamp. Next, gently wipe the surface using a dry, soft cloth, avoiding abrasives. Refrain from employing alcohol-based cleaners, and if needed, utilize a damp cloth. Make sure the lamp is fully dry before plugging it back in. Consistent and proper cleaning can help preserve its appearance and prolong its lifespan.