

STAHL+BAND

stahlandband.com | info@stahlandband.com | 424.228.4134



CAVE, Solid finish in Olive

List Price:

Cave Pendant ***XS***: 3,275

Cave Pendant ***Small***: \$3,800

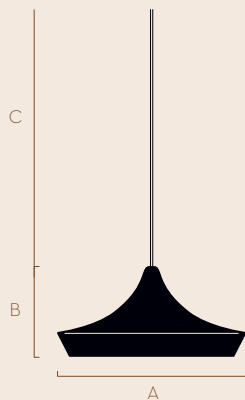
Cave Pendant ***Medium***: \$4,585

Cave Pendant ***Large***: \$5,960

CAVE

LIGHT/SHADE COLLECTION

A versatile direct overhead light. Gracefully concise, CAVE focuses light in a single space.



A	B	C (cm)
Ø30	13	100
Ø40	17	100
Ø50	21	100
Ø60	26	100

Height dimensions are variable as the cloth is handcrafted.

Materials

Shade - 100% Egyptian mercerized cotton, dyed using Oeko-Tex Standard 100 certified dyes.
Frame - Standard finish brass plated.

Pattern Finishes

• Solid • Inside Edge

Bulb Fitting and Type

Ø30-Ø40 - E12/E14 max 4w bulb LED.
Ø50-Ø60 - E26/E27 max 11w bulb LED.

COLOUR COLLECTION

NEUTRALS

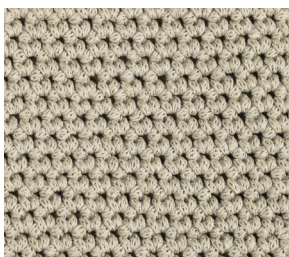
100% Egyptian mercerized cotton
Oeko-Tex Standard 100 certified dyes



Milk 292



Chalk 504



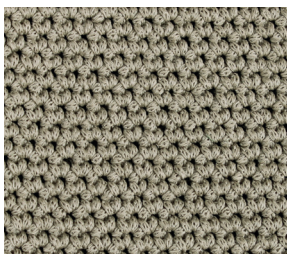
Ecru 291



Cloud 560



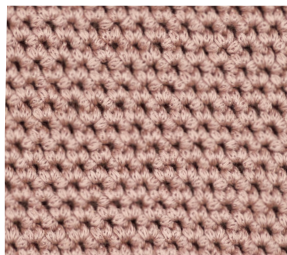
Down Grey 374



Putty 563



Powder 644



Rosa 575

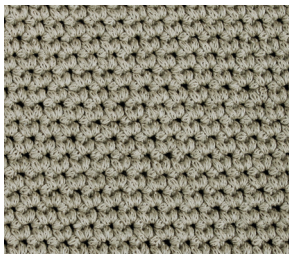
Our pendants are made using Naomi's signature mercerized cotton cord developed by the Naomi Paul Studio.

The yarn is first spun and dyed in Italy before being knitted into the tensioned cable yarn in Lancashire. The dyed cotton yarn is Oeko-Tex certified which guarantees the safety of a non-toxic and hypo-allergenic product.

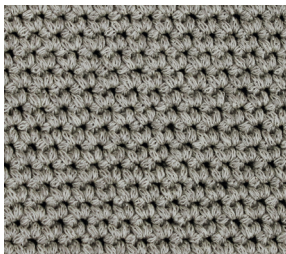
COLOUR COLLECTION

MARL

100% Egyptian mercerized cotton
Oeko-Tex Standard 100 certified dyes



Putty 363 + Ecrú 291 Marl



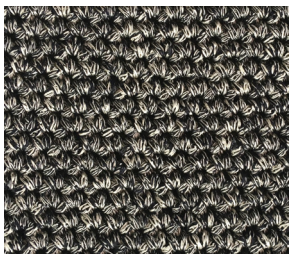
Down Grey 374 + Ecrú 291 Marl



Nut 436 + Chalk 504 Marl



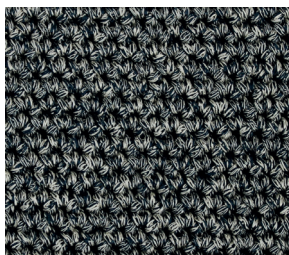
Storm 578 + Chalk 504 Marl



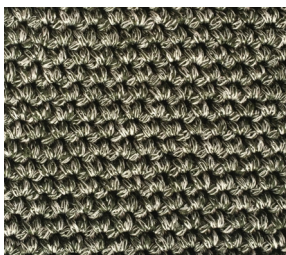
Midnight 346 + Chalk 504 Marl



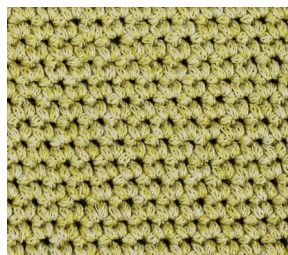
Russet 583 + Chalk 504 Marl



Deepsea 416 + Ecrú 291 Marl



Marsh 367 + Chalk 504 Marl



Green Gold 408 + Ecrú 291 Marl

COLOUR COLLECTION ACCENTS

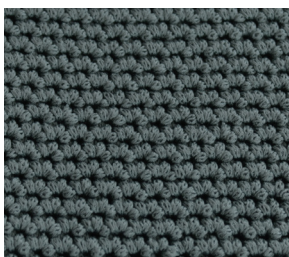
100% Egyptian mercerized cotton
Oeko-Tex Standard 100 certified dyes



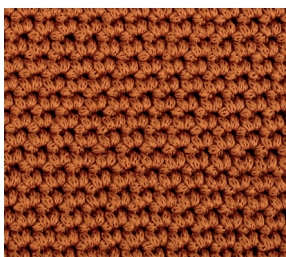
Olive 306



Green Gold 408



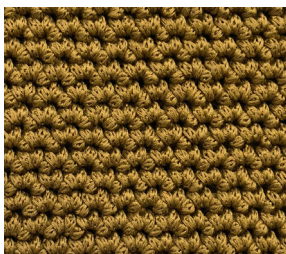
Storm 578



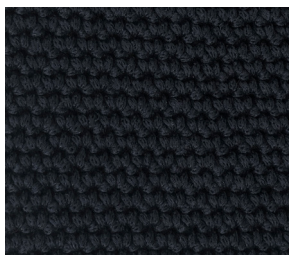
Rust 421



Marsh 367



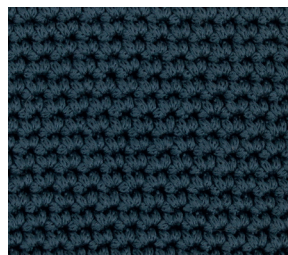
Russet 583



Midnight 346



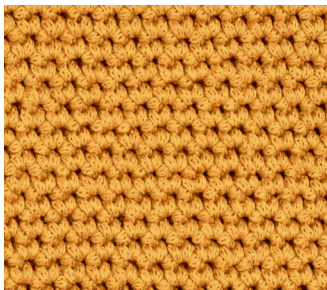
Nut 436



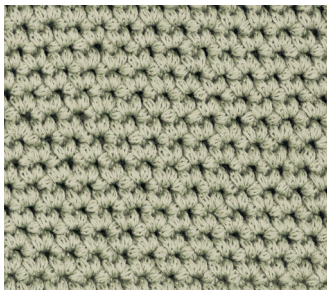
Deepsea 416

COLOUR COLLECTION
CELESTE

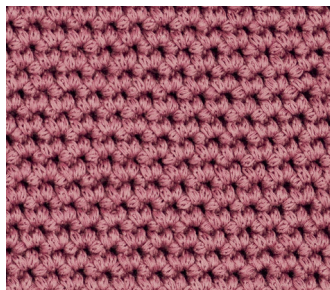
100% Egyptian mercerized cotton
Oeko-Tex Standard 100 certified dyes



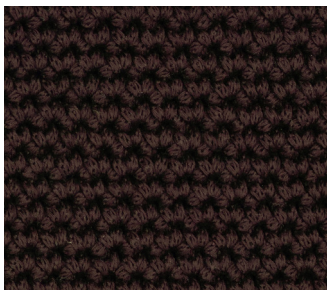
Clementine 582



Pistache 433



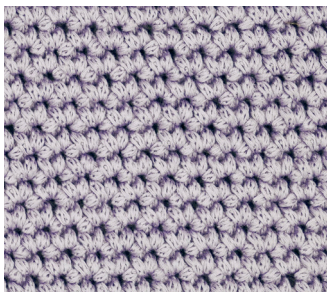
Bud 577



Cacao 441



Barley 296



Violette 324

FINISH & OPTIONS

BRAIDED CABLE

Each pendant & lighting design is supplied with one meter of 3 core triple insulated braided round cable, made in Northern Ireland.

Custom lengths can be supplied on request.

USA UL certified option available. *UL parts are supplied by our North America partners, Color Cord Company.

Cable standards:

Low Voltage European Directive
No. 2014/35/UE

Stranding of conductor:

Flexible tinned copper conductor

Insulation:

180 °C FEP insulation

Cable assembly:

The cores are twisted together

Outer Sheath:

Clear 90 °C PVC sheath

Textile Braid:

Polyester or Viscose Rayon

BRAIDED CORD



***UL BRAIDED CORD**



FINISH & OPTIONS

CEILING CANOPY & BULB HOLDER OPTIONAL SUSPENSION ROD

All our pendants are supplied with cable, ceiling canopy and bulb holder.

Our ceiling canopy standard finishes are WHITE and BRASS and bulb holders are BRASS. All other finishes can be made to order with additional fees.

Ceiling Canopy

Ø10 cm x H 2.5 cm

White or brass (custom options available)



WHITE

Our standard finish



LACQUERED
BRASS

Our standard finish

USA Ceiling Canopy

Ø12.5 cm x H 2 cm

White or brass (custom options available)



WHITE

Our standard finish



RAW
BRASS

Our standard finish

Bulb Holder

E12/E14 & E26/E27

Brass (custom options available)



LACQUERED
BRASS

Our standard finish

OPTIONAL SUSPENSION ROD

Suspension rod cable cover available in standard lacquered brass or custom finish.

Suspension Rod

Ø12 mm.

50 or 100 cm.

Custom lengths available on request.

