

STAHL+BAND

stahlandband.com | info@stahlandband.com | 424.228.4134



CAVE, Long Wall Light, Solid finish in Olive

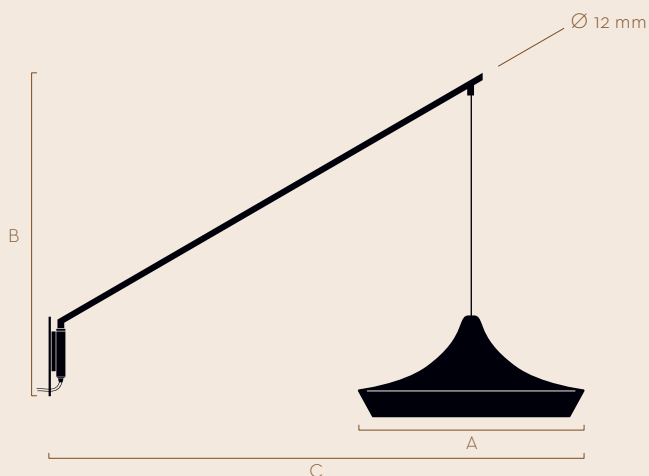
List Price:

Cave Wall *Medium Arm*: \$7,205

Cave Wall *Long Arm*: \$7,925

CAVE LONG WALL LIGHT LIGHT/SHADE COLLECTION

A direct light source, pivoting left and right for easy adjustment of light focus. Perfect for a social environment. Reaching over a dining table or accompanying an arm chair, to create an inviting space within a space.



A	B	C (cm)
Ø40	58	97
Ø50	58	102

Height dimensions are variable as the cloth is handcrafted.

Materials

Shade - 100% Egyptian mercerized cotton, dyed using Oeko-Tex Standard 100 certified dyes.
Pendant frame - Standard finish brass plated.
Wall arm and backplate - Standard finish raw brass.

Pattern Finishes

• Solid • Inside Edge

Details

Wall plate available with or without push switch.
Plug-in version includes 1.5 meter cable.
Total weight 2.5 kg.

Bulb Fitting and Type

Ø40 - E12/E14 max 4w bulb LED.
Ø50 - E26/E27 max 11w bulb LED.

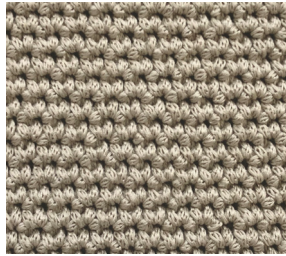
COLOUR COLLECTION

NEUTRALS

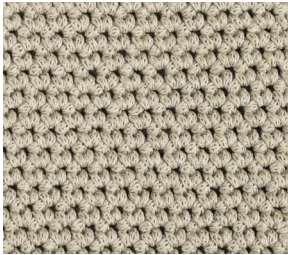
100% Egyptian mercerized cotton
Oeko-Tex Standard 100 certified dyes



Milk 292



Chalk 504



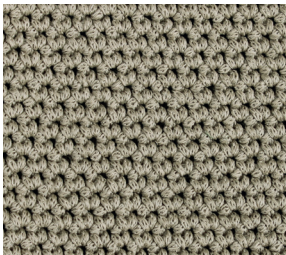
Ecru 291



Cloud 560



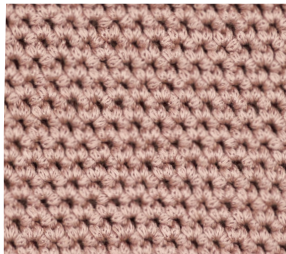
Down Grey 374



Putty 563



Powder 644



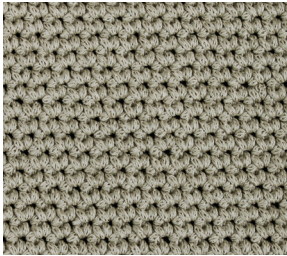
Rosa 575

Our pendants are made using Naomi's signature mercerized cotton cord developed by the Naomi Paul Studio.

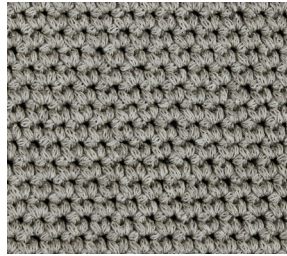
The yarn is first spun and dyed in Italy before being knitted in Lancashire. The dyed cotton yarn is Oeko-Tex certified which guarantees the safety of a non-toxic and hypo-allergenic product.

COLOUR COLLECTION
MARL

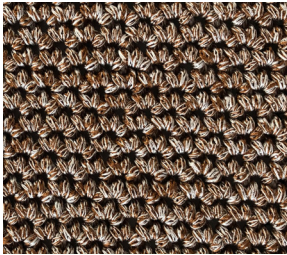
100% Egyptian mercerized cotton
Oeko-Tex Standard 100 certified dyes



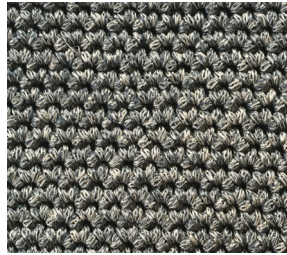
Putty 363 + Ecrú 291 Marl



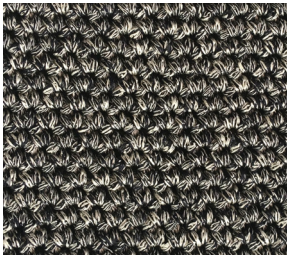
Down Grey 374 + Ecrú 291 Marl



Nut 436 + Chalk 504 Marl



Storm 578 + Chalk 504 Marl



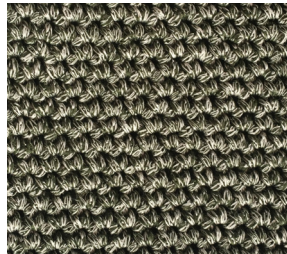
Midnight 346 + Chalk 504 Marl



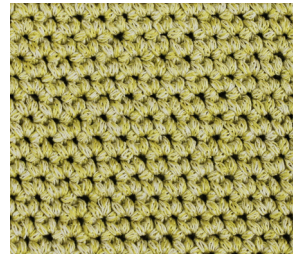
Russet 583 + Chalk 504 Marl



Deepsea 416 + Ecrú 291 Marl



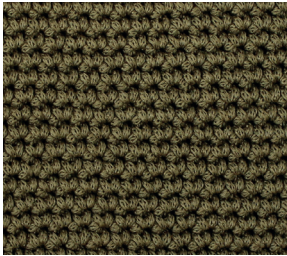
Marsh 367 + Chalk 504 Marl



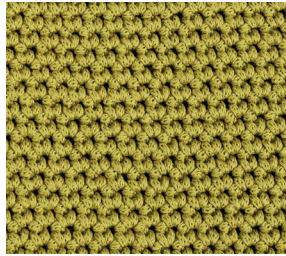
Green Gold 408 + Ecrú 291 Marl

COLOUR COLLECTION
ACCENTS

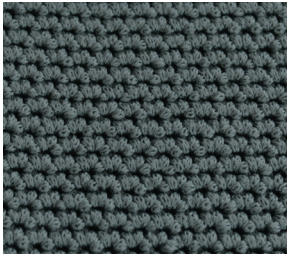
100% Egyptian mercerized cotton
Oeko-Tex Standard 100 certified dyes



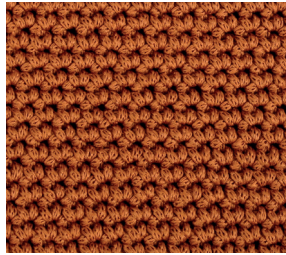
Olive 306



Green Gold 408



Storm 578



Rust 421



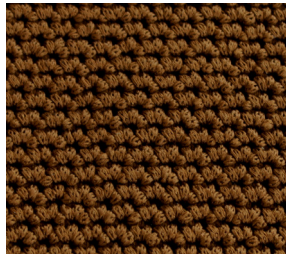
Marsh 367



Russet 583



Midnight 346



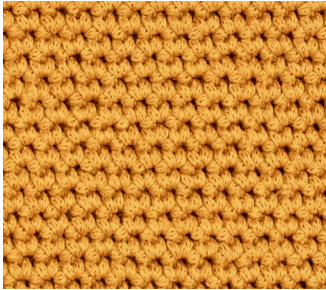
Nut 436



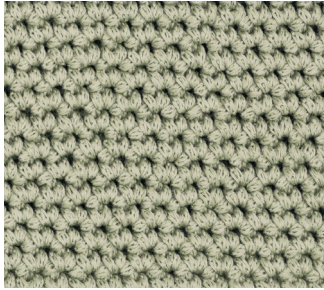
Deepsea 416

COLOUR COLLECTION
CELESTE

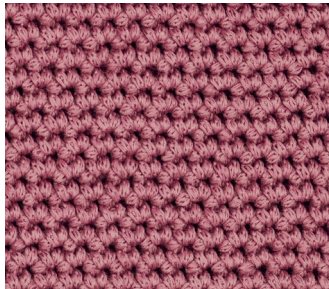
100% Egyptian mercerized cotton
Oeko-Tex Standard 100 certified dyes



Clementine 582



Pistache 433



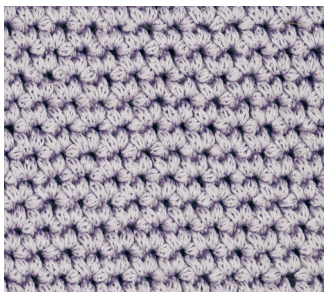
Bud 577



Cacao 441



Barley 296



Violette 324

FINISH & OPTIONS

BRAIDED CABLE

Each pendant & lighting design is supplied with one meter of 3 core triple insulated braided round cable, made in Northern Ireland.

Custom lengths can be supplied on request.

USA UL certified option available. *UL parts are supplied by our North America partners, Color Cord Company.

Cable standards:

Low Voltage European Directive
No. 2014/35/UE

Stranding of conductor:

Flexible tinned copper conductor

Insulation:

180 °C FEP insulation

Cable assembly:

The cores are twisted together

Outer Sheath:

Clear 90 °C PVC sheath

Textile Braid:

Polyester or Viscose Rayon

BRAIDED CORD

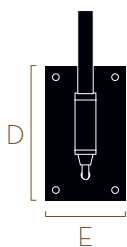


***UL BRAIDED CORD**

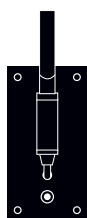


FINISH & OPTIONS

WALL LIGHTS WIRING



No switch



Push switch



Plug-in



Hard wired

Available with or without push switch, please specify on order.

Plug-in version includes 1.5 meter cable.

Short	Switch	D x E (cm)
USA	No switch	11 x 8
	Push switch	13 x 8
EU	No switch	11 x 6
	Push switch	13 x 6
Long	Switch	D x E (cm)
	No switch	15 x 8
	Push switch	17 x 8