



MONIKA, Colour Block finish in Milk and Ecu

List Price:

Monika Pendant **Small:** \$4,585

Monika Pendant **Medium:** \$6,500

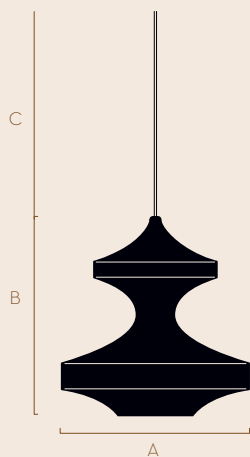
Monika Pendant **Large:** \$12,450

Monika Pendant **XL:** \$17,885

## MONIKA

### OMI COLLECTION

A diffused atmospheric light. In its largest size a focal point in an entrance, or clustered in the smaller size as a unique statement chandelier.



A	B	C (cm)
Ø 32	32	100
Ø 50	50	100
Ø 80	80	300
Ø100	110	300

Height dimensions are variable as the cloth is handcrafted.

#### Materials

Shade - 100% Egyptian mercerized cotton, dyed using Oeko-Tex Standard 100 certified dyes.  
Frame - Standard finish brass plated.

#### Pattern Finishes

• Solid • Colour Block

#### Bulb Fitting, Type and Quantity

Ø32 - E12/E14 max 4w bulb LED.

Ø50 - E26/E27 max 11w bulb LED.

Ø80-Ø100 - E26/E27 max 11w bulb LED (x3).

## COLOUR COLLECTION

### NEUTRALS

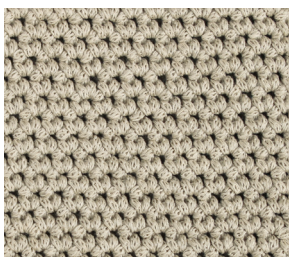
100% Egyptian mercerized cotton  
Oeko-Tex Standard 100 certified dyes



Milk 292



Chalk 504



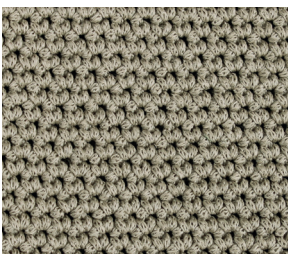
Ecru 291



Cloud 560



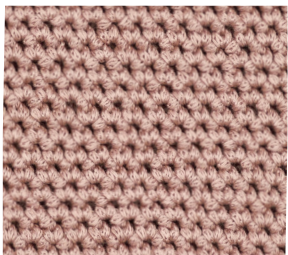
Down Grey 374



Putty 563



Powder 644



Rosa 575

Our pendants are made using Naomi's signature mercerized cotton cord developed by the Naomi Paul Studio.

The yarn is first spun and dyed in Italy before being knitted into the tensioned cable yarn in Lancashire. The dyed cotton yarn is Oeko-Tex certified which guarantees the safety of a non-toxic and hypo-allergenic product.



## COLOUR COLLECTION MARL

100% Egyptian mercerized cotton  
Oeko-Tex Standard 100 certified dyes



Putty 363 + Ecrú 291 Marl



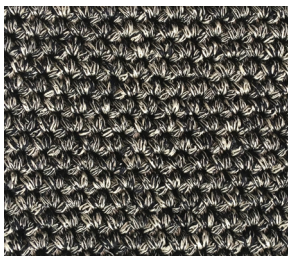
Down Grey 374 + Ecrú 291 Marl



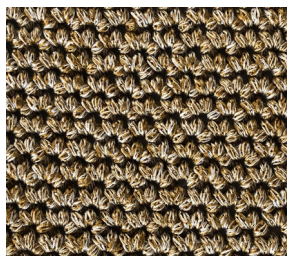
Nut 436 + Chalk 504 Marl



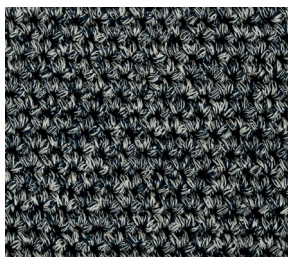
Storm 578 + Chalk 504 Marl



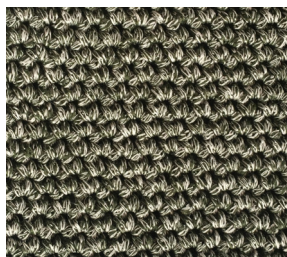
Midnight 346 + Chalk 504 Marl



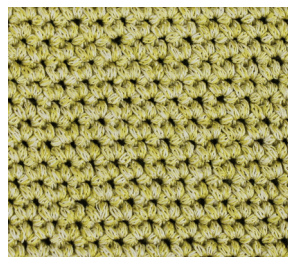
Russet 583 + Chalk 504 Marl



Deepsea 416 + Ecrú 291 Marl



Marsh 367 + Chalk 504 Marl



Green Gold 408 + Ecrú 291 Marl

## COLOUR COLLECTION ACCENTS

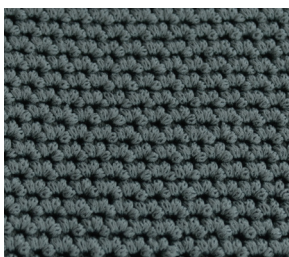
100% Egyptian mercerized cotton  
Oeko-Tex Standard 100 certified dyes



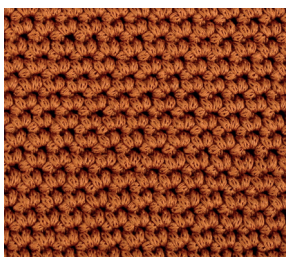
Olive 306



Green Gold 408



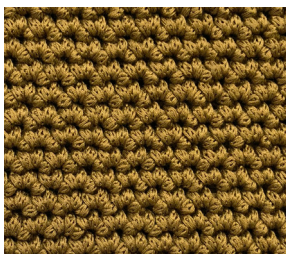
Storm 578



Rust 421



Marsh 367



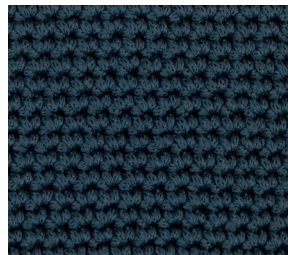
Russet 583



Midnight 346



Nut 436

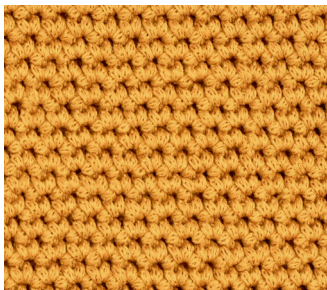


Deepsea 416

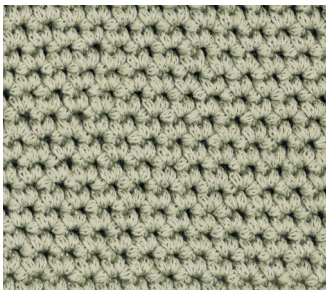


COLOUR COLLECTION  
CELESTE

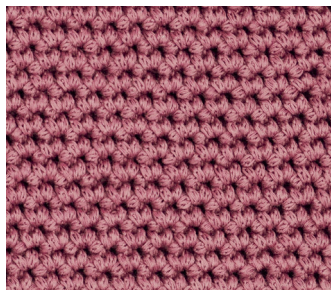
100% Egyptian mercerized cotton  
Oeko-Tex Standard 100 certified dyes



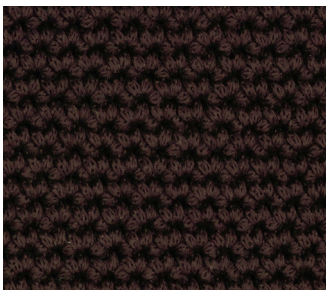
Clementine 582



Pistache 433



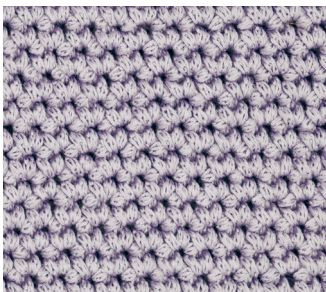
Bud 577



Cacao 441



Barley 296



Violette 324

## FINISH & OPTIONS

### BRAIDED CABLE

Each pendant & lighting design is supplied with one meter of 3 core triple insulated braided round cable, made in Northern Ireland.

Custom lengths can be supplied on request.

USA UL certified option available. \*UL parts are supplied by our North America partners, Color Cord Company.

#### **Cable standards:**

Low Voltage European Directive  
No. 2014/35/UE

#### **Stranding of conductor:**

Flexible tinned copper conductor

#### **Insulation:**

180 °C FEP insulation

#### **Cable assembly:**

The cores are twisted together

#### **Outer Sheath:**

Clear 90 °C PVC sheath

#### **Textile Braid:**

Polyester or Viscose Rayon

#### **BRAIDED CORD**



#### **\*UL BRAIDED CORD**



## FINISH & OPTIONS

### CEILING CANOPY & BULB HOLDER OPTIONAL SUSPENSION ROD

All our pendants are supplied with cable, ceiling canopy and bulb holder.

Our ceiling canopy standard finishes are WHITE and BRASS and bulb holders are BRASS. All other finishes can be made to order with additional fees.

#### Ceiling Canopy

Ø10 cm x H 2.5 cm

White or brass (custom options available)



WHITE

Our standard finish



LACQUERED  
BRASS

Our standard finish

#### USA Ceiling Canopy

Ø12.5 cm x H 2 cm

White or brass (custom options available)



WHITE

Our standard finish



RAW  
BRASS

Our standard finish

#### Bulb Holder

E12/E14 & E26/E27

Brass (custom options available)



LACQUERED  
BRASS

Our standard finish

## OPTIONAL SUSPENSION ROD

Suspension rod cable cover available in standard lacquered brass or custom finish.

#### Suspension Rod

Ø12 mm.

50 or 100 cm.

Custom lengths available on request.

