

A close-up photograph of a chair seat made from woven leather strips. The leather is a warm, rust-colored hue. The strips are interlaced in a tight, repeating pattern, creating a textured surface. The lighting is soft, highlighting the natural grain and slight variations in color of the leather.

STAHL+BAND

LEATHER

We use high quality saddle leather in our pieces.

leather is a natural material and will patina and stretch through its use.

Our Natural leather is more prone to change as it is used and will grow more rich in color as it is exposed to sunlight, touch, and moisture.

Campaign Chair with Woven Leather Seat shown in Rust Leather

STAHL+BAND

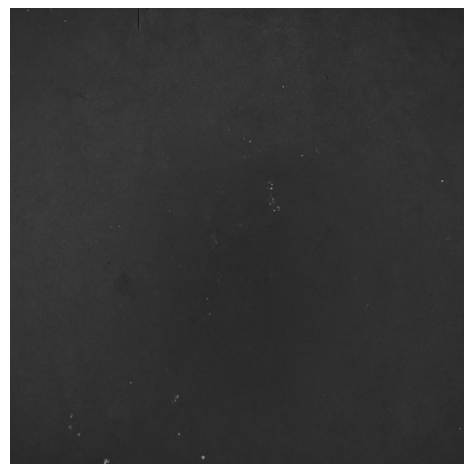
LEATHER



Natural



Cognac



Black



Rust