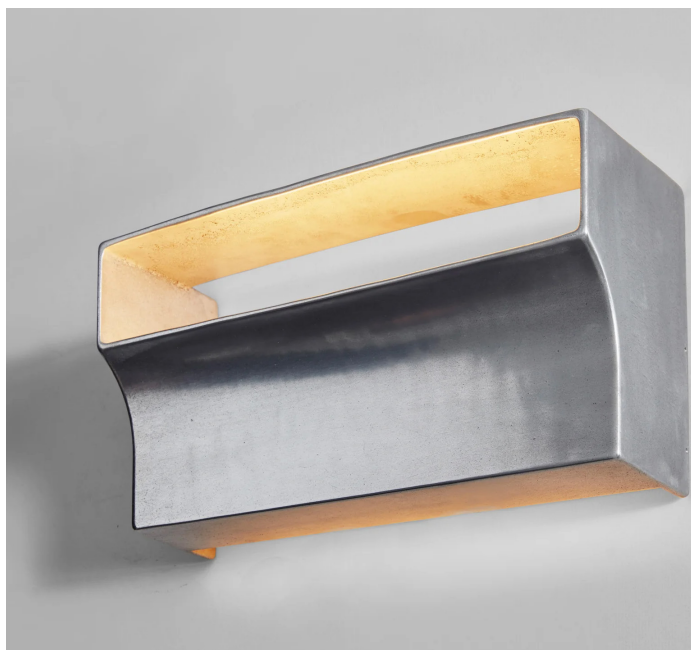


# STAHL+BAND

stahlandband.com




info@stahlandband.com

424.228.4134



*Scoop Wall Light shown in Aluminium.*

## SCOOP WALL LIGHT

|                     |   |  |
|---------------------|---|--|
| Standard Dimensions | 7.1" H × 4.7" D × 13" W   |  |
| Details             | <p>US/ JPN</p> <p>Lightbulb type: 9 W LED max (not included)</p> <p>Fitting Description: Dual Holder Edison (DIA 26mm-E26)</p> <p>Suggested Lumen rating: 250LM</p> <p>Wattage: 3.3 Equiv 25W Incandescent.</p> <p>Kelvin Rating: 2700k-3000k Warm White.</p> <p>Voltage: 110-120v / 60hz ac</p> <p>Dimmability: Bulb Dependant.</p> <p>AU / UK / EU</p> <p>Lightbulb type: 9 W LED max (included)</p> <p>Fitting Description: Dual Holder Edison (DIA 26mm-E26)</p> <p>Suggested Lumen rating: 250LM</p> <p>Wattage: 3.3 Equiv 25W Incandescent.</p> <p>Kelvin Rating: 2700k Warm White.</p> <p>Voltage: 230-240v / 50-60hz</p> <p>Dimmability: No</p> | <p><i>* Hardwired lamps must be installed by a professional.</i></p>   |
| Available Finishes  | <div></div> <p>Brass      Blackened      Aluminium</p>   | <p><i>Because each object is cast in small batches, slight variations will occur from one individual piece to another.</i></p> |
| List Price *        | Upon Request  | <p><i>* List pricing is subject to change and does not include shipping.</i></p>   |

# STAHL+BAND

stahlandband.com  
info@stahlandband.com  
424.228.4134

## Specification Drawing

