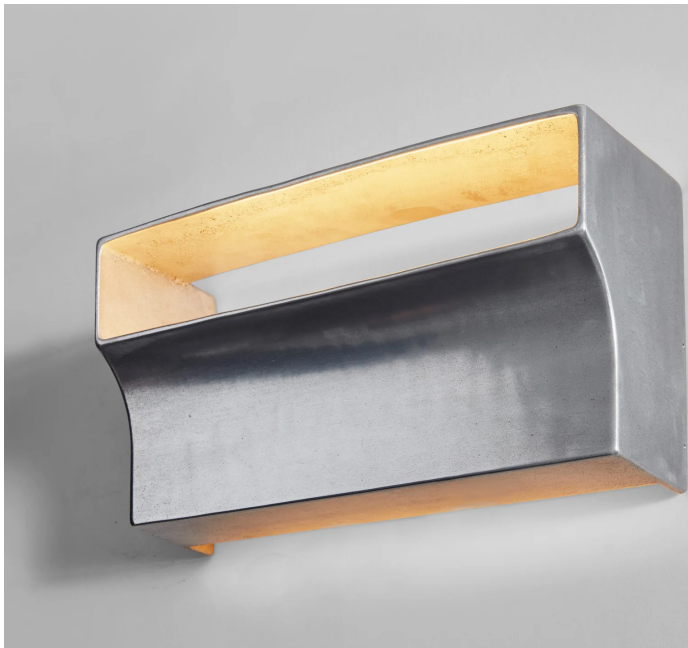


STAHL+BAND

stahlandband.com

info@stahlandband.com

424.228.4134



Scoop Wall Light, Aluminium.

SCOOP WALL LIGHT by Henry Wilson

Standard Dimensions	7.1" H × 4.7" D × 13" W	
Details	US/ JPN	<i>* Hardwired lamps must be installed by a professional.</i>
	Lightbulb type: 9 W LED max (not included)	
	Fitting Description: Dual Holder Edison (DIA 26mm-E26)	
	Suggested Lumen rating: 250LM	
	Wattage: 3.3 Equiv 25W Incandescent.	
	Kelvin Rating: 2700k-3000k Warm White.	
	Voltage: 110-120v / 60hz ac	
	Dimmability: Bulb Dependant.	
	AU / UK / EU	
	Lightbulb type: 9 W LED max (included)	
	Fitting Description: Dual Holder Edison (DIA 26mm-E26)	
	Suggested Lumen rating: 250LM	
	Wattage: 3.3 Equiv 25W Incandescent.	
	Kelvin Rating: 2700k Warm White.	
	Voltage: 230-240v / 50-60hz	
	Dimmability: No	
Materials	<div>Metal<div><div>Brass</div><div>Blackened</div><div>Aluminium</div></div></div>	
	<i>Because each object is cast in small batches, slight variations will occur from one individual piece to another.</i>	
List Price *	Starting at \$2,125	
	<i>* List pricing is subject to change and does not include shipping.</i>	

STAHL+BAND

stahlandband.com
info@stahlandband.com
424.228.4134

Specification Drawing

