



CAVE, Short Wall Light in Putty.



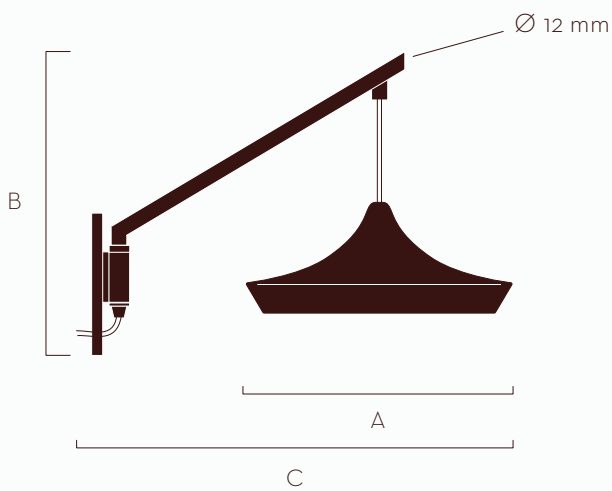
CAVE, Short Wall Light in Cloud



CAVE, Double Cloth Edge finish in Olive and Green Gold

CAVE SHORT WALL LIGHT LIGHT/SHADE COLLECTION

A direct light source, pivoting left and right for easy adjustment of light focus. Perfect to create a relaxed atmosphere for bedside lighting, or intimate restaurants.



A	B	C (cm)
Ø 30	30	50

Height dimensions are variable as the cloth is handcrafted.

Materials

Shade - 100% Egyptian mercerized cotton, dyed using Oeko-Tex Standard 100 certified dyes.
Pendant frame - Standard finish brass plated.
Wall arm and backplate - Standard finish raw brass.

Pattern Finishes

• Solid • Double Cloth Edge

Details

Wall plate available with or without push switch, hardwired or plug-in. Plug-in version includes 1.5 meter cable.

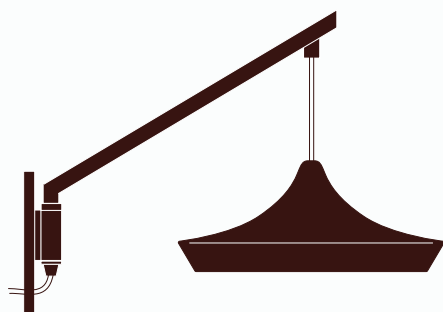
Total weight 1.5 kg.

Bulb Fitting and Type

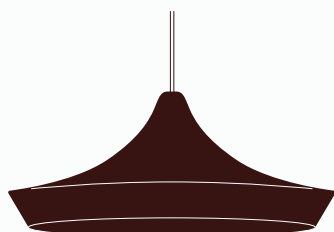
E12/E14 max 4w bulb LED.

CAVE SHORT WALL LIGHT
LIGHT/SHADE COLLECTION

PATTERN
SOLID



Pattern Finishes
• Solid

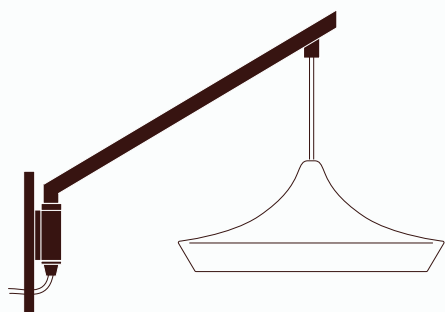


MAIN

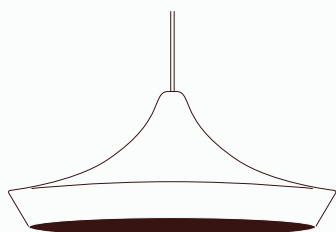
DOUBLE
CLOTH EDGE

CAVE SHORT WALL LIGHT
LIGHT/SHADE COLLECTION

PATTERN
DOUBLE CLOTH EDGE



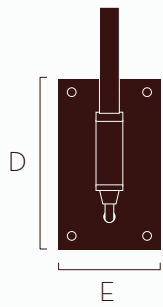
Pattern Finishes
• Double Cloth Edge



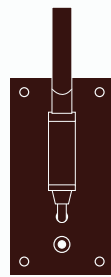
MAIN
DOUBLE
CLOTH EDGE

WIRING OPTIONS

SHORT WALL LIGHT



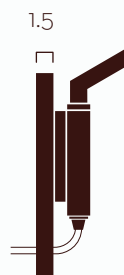
No switch



Push switch



Plug-in



Hard wired

Available with or without push switch, please specify on order.

Plug-in version includes 1.5 meter cable.

Short	Switch	D x E (cm)
	No switch	11 x 8
	Push switch	13 x 8

COLOUR COLLECTION

NEUTRALS

100% Egyptian mercerized cotton
Oeko-Tex Standard 100 certified dyes

*Colour swatches available to order



Milk 292



Chalk 504



Ecru 291



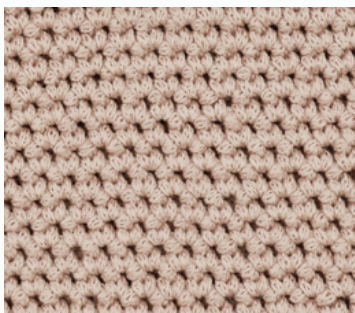
Cloud 560



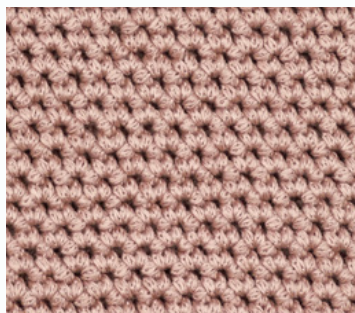
Down Grey 374



Putty 363



Powder 644



Rosa 575

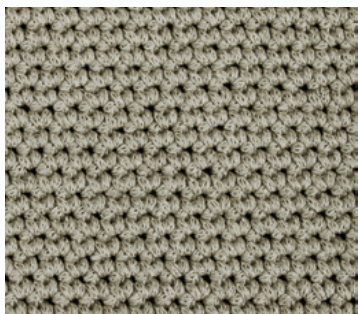
Our pendants are made using Naomi's signature mercerized cotton cord developed by the Naomi Paul Studio.

The yarn is first spun and dyed in Italy before being knitted into the tensioned cable yarn in Lancashire. The dyed cotton yarn is Oeko-Tex certified which guarantees the safety of a non-toxic and hypo-allergenic product.

COLOUR COLLECTION
MARL

100% Egyptian mercerized cotton
Oeko-Tex Standard 100 certified dyes

*Colour swatches available to order



Putty 363 + Ecrú 291 Marl



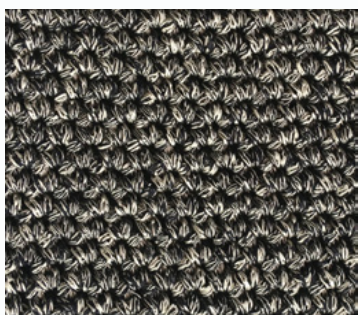
Down Grey 374 + Ecrú 291 Marl



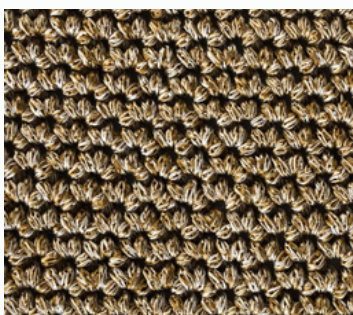
Nut 436 + Chalk 504 Marl



Storm 578 + Chalk 504 Marl



Midnight 346 + Chalk 504 Marl



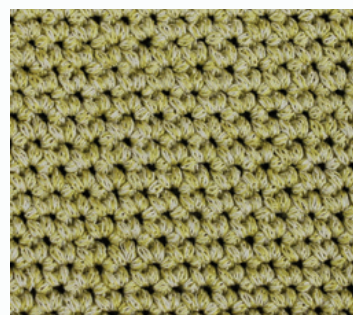
Russet 584 + Chalk 504 Marl



Deepsea 416 + Ecrú 291 Marl



Marsh 367 + Chalk 504 Marl



Green Gold 408 + Ecrú 291 Marl

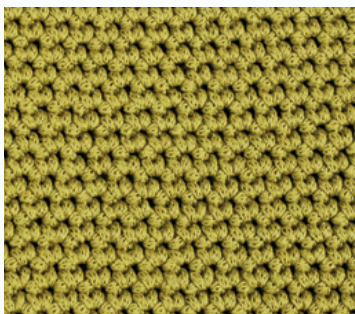
COLOUR COLLECTION
ACCENTS

100% Egyptian mercerized cotton
Oeko-Tex Standard 100 certified dyes

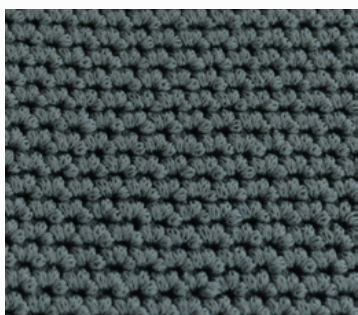
*Colour swatches available to order



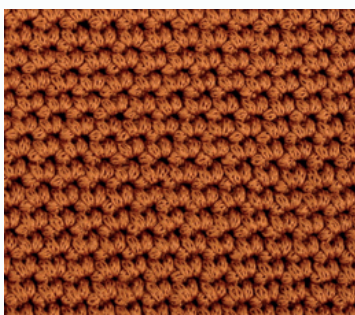
Olive 306



Green Gold 408



Storm 578



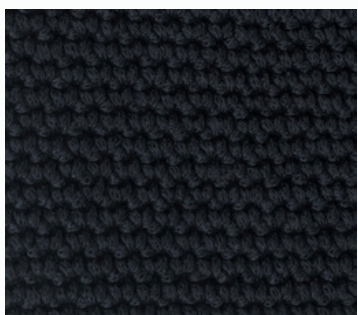
Rust 421



Marsh 367



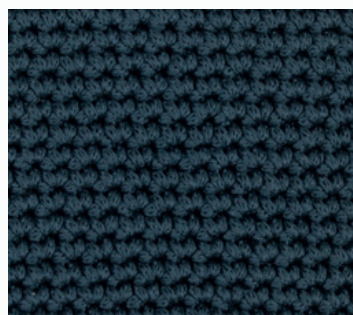
Russet 583



Midnight 346



Nut 436

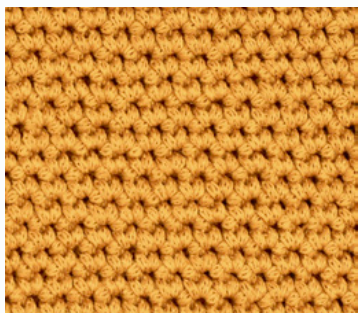


Deepsea 416

COLOUR COLLECTION
CELESTE

100% Egyptian mercerized cotton
Oeko-Tex Standard 100 certified dyes

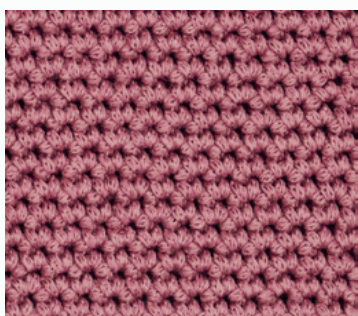
*Colour swatches available to order



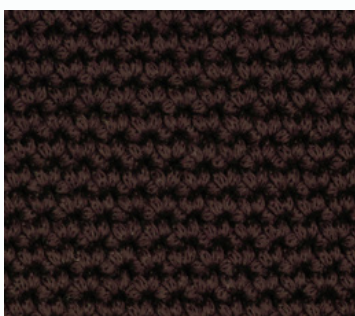
Clementine 582



Pistache 433



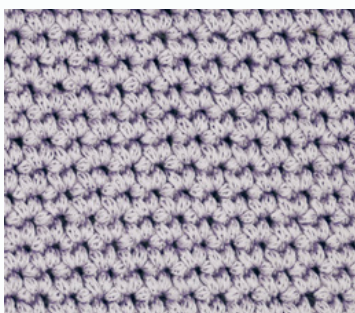
Bud 577



Cacao 441



Barley 296



Violette 324